

About the Asahi Site

The Asahi site is one of the foremost, large-scale settlements in Japan being continuously occupied from the Early Yayoi to Early Kofun Period (6th century BC to 4th century AD). It flourished as a center of subsistence and culture in the region, playing an important role in the Yayoi Period by connecting cultures between east and west.

In the 1970's, large scale excavations were initiated because of road construction. These excavations revealed that the previously known shell middens and cultural layers actually originated from a single settlement, now designated as the "Asahi Site." Based on surveys and excavations, the extent of this site is estimated to be 1.4km (east-west) by 0.8km (north-south) with an area of 0.8 to 1 million square meters. Houses were built on top of the slightly elevated area within a valley oriented from northeast to southwest. The cemetery was distributed around the settlement with large-scale burials located on the eastern and western sides.

Other significant findings have excavated: a defensive enclosure ditch (with abatis and pickets); an intentionally buried bronze bell; bead-making workshops; and, the earliest fish trap known in Japan.

A Historic Site, the Kaigara-yama Shellmidden

The Kaigara-yama shellmidden, a site of long scholarly attention, is the earliest archaeological site in the Owari area, as well as the easternmost site of the western Japanese Early Yayoi culture. In December 1971, the Kaigara-yama shell midden, and 10,169.4m² around it, was registered as a National Historic Site. This site is located in the southwestern part of the Asahi Site and marks the starting point for habitation at this large settlement.

Artifacts from the Asahi Site, a National Important Cultural Property

On September 6th 2012 a total of 2,028 artefacts from the Asahi site were registered as National Important Cultural Properties. These excavated artefacts were considered representative of large-scale settlements of the Yayoi Period in the Tokai area. The variety of these artefacts are nationally important material providing a better understanding of culture and life in the Yayoi Period.



Entry fee

Division	Individual	Group (20 people or more)	1 year passport	Set ticket with the Kiyosu castle	Set ticket with the Shidami tumuli museum
General	300yen	250yen	1,000yen	550yen	400yen
University / High School Students	200yen	150yen	600yen	—	300yen

*School events, students under junior-high school, and people with disability are free.

General information

- 1, Asahikaizuka, Kiyosu Shi, Aichi, 452-0932, Japan ● TEL/052-409-1467
- open 9:30 / close 17:00 ● Closed on Mondays (When Monday is a national holiday, opened on Monday and closed on the next day.) and from December 28th to January 3rd.



aichi asahi site
[website] <https://aichi-asahi.jp/>

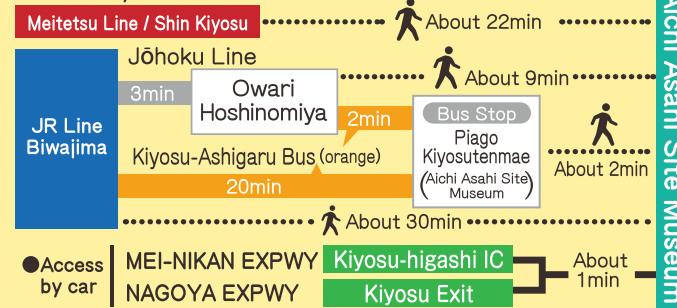


ACCESS



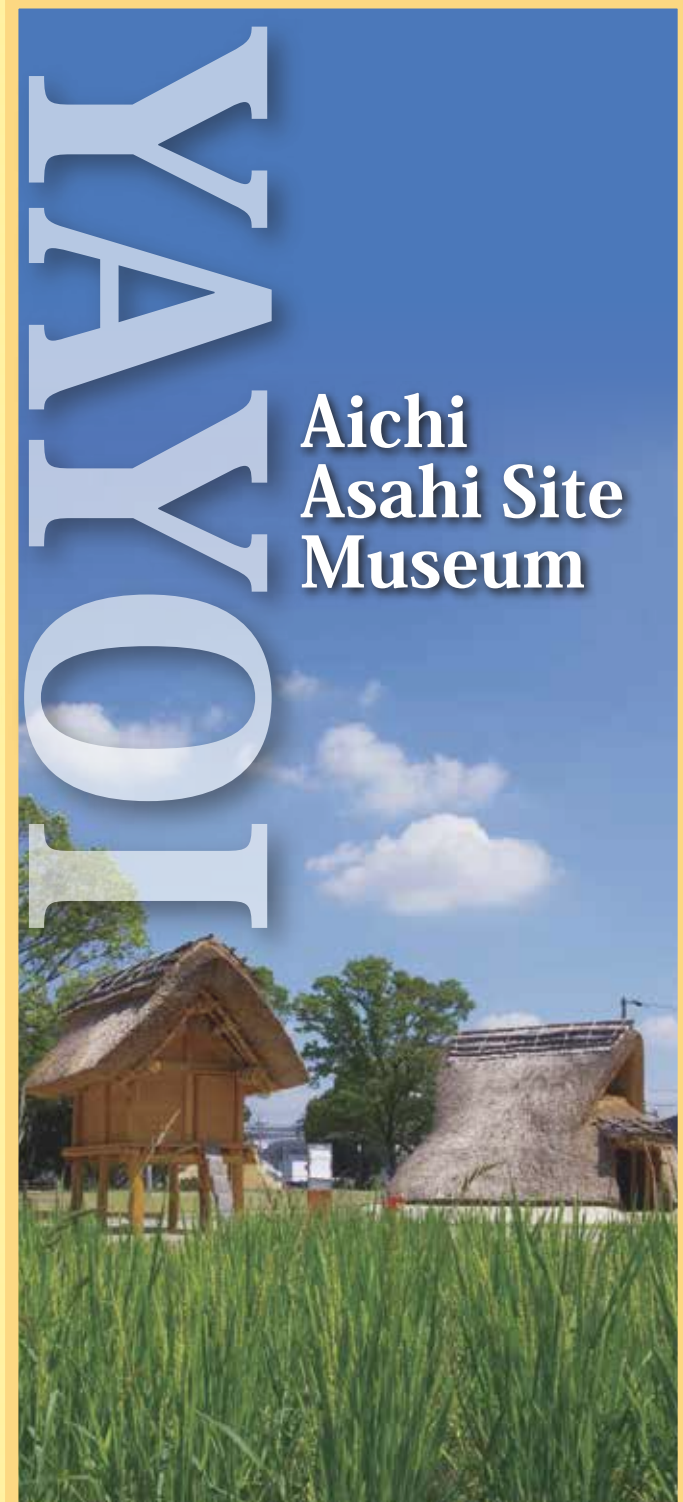
*Please use public transport as we have limited number of parking space.

Access by train



● Parking (free) ... Standard: 15 lots Motor coach: 3 lots

Designated administrator : Asahi Site Museum Common Enterprise



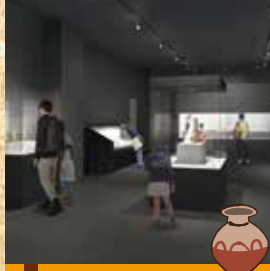
Aichi Asahi Site Museum

A site museum introducing the Asahi site, the largest Yayoi period settlement in the Tokai area.



Exhibition Room 1

- ▶ Asahi Site Excavation Map
- ▶ Crossroad Vision
- ▶ Asahi Site Landscape Diorama
- ▶ Chronological Overview



Exhibition Room 2

- ▶ Artifacts from the Asahi Site (National Important Cultural Property)
- ▶ The Design of Tools
- ▶ The Design of Ornaments
- ▶ The Design of Prayer
- ▶ The Design of Metal Products

Special Exhibition Room



Workshop Room

We offer workshops for ancient bead / pottery making.

Kids Archeology Lab

- ▶ Yayoi period tool experience
- ▶ Yayoi period costume experience
- ▶ Pottery reconstruction puzzle / Pottery decorating

>Kids Archeology Lab is free

Seminar Room

This room is available for events such as public lectures, guidance for school kids, as well as relaxation.

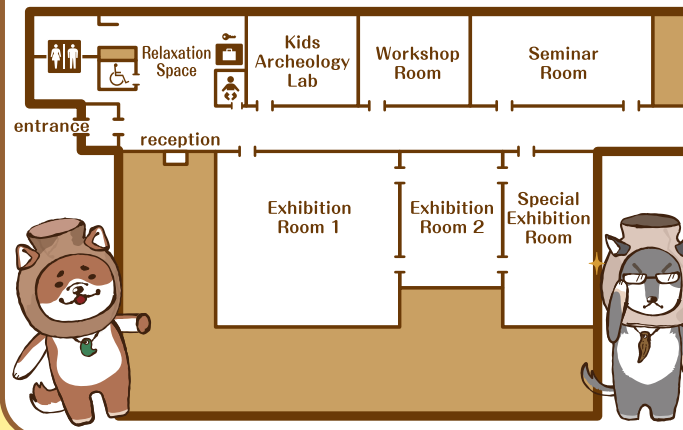
Nursing Room

Relaxation Space

Site Map



Floor Plan of the Main Building



Kaigara-yama Shellmidden Community Square

A guidance facility for the historic site Kaigara-yama shellmidden. Square for relaxation and eating in front of the building.



Archaeological Features of the Yayoi Period



Underground, the archaeological features such as the Yayoi Period's shellmiddens are preserved with reconstructions of the enclosure ditch and shellmidden layer from the beginning of Yayoi Period are displayed.

- | | |
|-----------------------------------|---|
| 1 Shellmidden no.1 (Kaigara-yama) | 4 Cross Section of the Enclosure Ditch and Shellmidden Layers |
| 2 Shellmidden no.2 | 5 Outline of the Enclosure Ditch |
| 3 Shellmidden no.3 | 6 Outline of the Shellmidden |

The Yayoi Village Experience



We conduct seasonal study programs to experience life in the reconstructed Yayoi Period village, located next to the site.

- | | |
|------------------------------------|---|
| 1 A Reconstructed Dwelling Pit | 4 A Reconstructed Square-shaped moated burial |
| 2 A Reconstructed Storage Building | 5 A Reconstructed Dwelling Pit from Daichi Site |
| 3 Paddy Field Experience | |